

RESEARCH ARTICLE

The mechanistic insight of a specific interaction between 15d-Prostaglandin-J2 and eIF4A suggests an evolutionary conserved role across species

So Jeong Yun^{2,*}, Hyunjoon Kim¹, Seung-Hyun Jung³, Joon Hyun Kim¹, Jeong Eun Ryu¹, N. Jiten Singh⁴, Jouhyun Jeon⁵, Jin-Kwan Han¹, Cheol-Hee Kim³, Sanguk Kim^{5,6}, Sung Key Jang¹ and Woo Jae Kim^{7,*}‡

ABSTRACT

15-deoxy-delta 12,14-prostaglandin J2 (15d-PGJ2) is an anti-inflammatory/anti-neoplastic prostaglandin that functions through covalent binding to cysteine residues of various target proteins. We previously showed that 15d-PGJ2 mediated anti-inflammatory responses are dependent on the translational inhibition through its interaction with eIF4A (Kim et al., 2007). Binding of 15d-PGJ2 to eIF4A specifically blocks the interaction between eIF4G and eIF4A, which leads to the formation of stress granules (SGs), which then cluster mRNAs with inhibited translation. Here, we show that the binding between 15d-PGJ2 and eIF4A specifically blocks the interaction between the MIF4G domain of eIF4G and eIF4A. To reveal the mechanism of this interaction, we used computational simulation-based docking studies and identified that the carboxyl tail of 15d-PGJ2 could stabilize the binding of 15d-PGJ2 to eIF4A through arginine 295 of eIF4A, which is the first suggestion that the 15d-PGJ2 tail plays a physiological role. Interestingly, the putative 15d-PGJ2 binding site on eIF4A is conserved across many species, suggesting a biological role. Our data propose that studying 15d-PGJ2 and its targets may uncover new therapeutic approaches in anti-inflammatory drug discovery.

KEY WORDS: 15d-PGJ2, eIF4A, Inflammation, Prostaglandins, Stress granules, Translation

INTRODUCTION

15-deoxy-delta 12,14-prostaglandin J2 (15d-PGJ2) is an anti-inflammatory and anti-neoplastic prostaglandin. Although 15d-PGJ2 is known as an agonist of peroxisome proliferator-activated

receptor-gamma (PPAR γ), which is a transcriptional modulator that represses transcription of pro-inflammatory mRNAs, evidence suggests that 15d-PGJ2 also can function independently of PPAR γ (Nosjean and Boutin, 2002). It has been reported that the PPAR γ -independent action of 15d-PGJ2 resulted from the covalent modification of cysteine residues of target proteins. For example, 15d-PGJ2 blocks pro-inflammatory NF- κ B signaling cascades independently of PPAR γ through direct interactions with signaling molecules such as IKK (I κ B kinase) (Straus et al., 2000). Other physiological activities of 15d-PGJ2, such as cytoprotection and inhibition of cell proliferation, have also been reported to have occurred through this direct binding property of 15d-PGJ2 (Pereira et al., 2006). 15d-PGJ2 is a member of the cyclopentenone-type prostaglandins (PGs). Cyclopentenone-type PGs, unlike other classes of PGs, contain an electrophilic α,β -unsaturated ketone moiety in the cyclopentenone ring. This reactive center of the cyclopentenone PGs can act as a Michael addition acceptor and react with nucleophiles, such as the free thiol group of the glutathione and cysteine residues in cellular proteins. These properties of 15d-PGJ2 could explain the biological activities of 15d-PGJ2 independent of PPAR γ (Shibata, 2015; Kondo et al., 2002).

Among the cellular proteins that are covalently modified by 15d-PGJ2, eIF4A is the only factor that directly modulates the initiation of translation (Kim et al., 2007). eIF4A is the founding member of the 'DEAD-box' family of ATP-dependent helicases (Rogers et al., 2001; Oberer et al., 2005). It consists of two distinct domains connected through a short linker, and both domains are required for proper function of the helicase. The ATPase activity of eIF4A is stimulated by eIF4G, and the helicase activity of eIF4A, either alone or as part of the eIF4F complex, is stimulated by eIF4B (Rozen et al., 1990; Schütz et al., 2008).

Recent studies focus on the function of eIF4A and its relation to cancer and inflammation for the following reasons. First, it was reported that PDCD4, a novel tumor suppressor protein, interacts with eIF4A, which results in the inhibition of helicase activity and translation (Yang et al., 2003), indicating that blocking the cell-proliferative function of eIF4A is a critical step to suppress tumorigenesis. Second, pateamine A (PatA), a potent anti-proliferative and pro-apoptotic marine natural product, can bind to and enhance the intrinsic enzymatic activities of eIF4A. PatA inhibits the eIF4A-eIF4G association and promotes the formation of a stable ternary complex between eIF4A and eIF4B (Low et al., 2005). Finally, our previous report suggests that 15d-PGJ2 covalently binds to a cysteine residue (C264) in eIF4A, resulting in the inhibition of translation initiation and formation of stress granules (SGs) (Kim et al., 2007). Following our previous results, here we report further characterization of the interaction between 15d-PGJ2 and eIF4A. Also, we will show

¹PBC, Department of Life Science, Pohang University of Science and Technology, Pohang 37673, Republic of Korea. ²School of Interdisciplinary Bioscience and Bioengineering, Pohang University of Science and Technology, Pohang 37673, Republic of Korea. ³Department of Biology, Chungnam National University, Daejeon 34134, Republic of Korea. ⁴Center for Superfunctional Materials, Department of Chemistry, Pohang University of Science and Technology, Pohang 37673, Republic of Korea. ⁵Division of Molecular and Life Science, Pohang University of Science and Technology, Pohang 37673, Republic of Korea. ⁶School of Interdisciplinary Bioscience and Bioengineering, Pohang University of Science and Technology, Pohang 37673, Republic of Korea. ⁷Department of Cellular and Molecular Medicine, Faculty of Medicine, University of Ottawa, Ottawa, K1H 8M5, Canada.

*These two authors equally contributed to this work

‡ Author for correspondence (wkim@uottawa.ca)

 S.K., 0000-0002-3449-3814; W.J.K., 0000-0002-2826-4177

This is an Open Access article distributed under the terms of the Creative Commons Attribution License (<http://creativecommons.org/licenses/by/3.0>), which permits unrestricted use, distribution and reproduction in any medium provided that the original work is properly attributed.

the effect of 15d-PGJ2 on various model organisms following our findings on evolutionary conserved 15d-PGJ2 binding sites of eIF4A across species.

RESULTS AND DISCUSSION

15d-PGJ2 binding to eIF4A specifically blocks the interaction between the MIF4G domain of eIF4G and eIF4A

We previously reported that the direct interaction between 15d-PGJ2 and eIF4A can specifically block eIF4A–eIF4G binding and inhibit translation initiation (Kim et al., 2007). To further analyze this interaction, we performed a series of immunoprecipitation experiments using other eIF4GI interacting proteins. When we immunoprecipitated FLAG-tagged eIF4A1, eIF4E or eIF3c, then performed immunoblotting with eIF4G antibody, we identified that the interactions of eIF4G with eIF4E (Fig. 1A, lanes 3 and 4) were partially affected by 15d-PGJ2, while the association of eIF4G with eIF3c was not affected (Fig. 1A, lanes 5 and 6). The interaction between eIF4A1 and eIF4GI is blocked by 15d-PGJ2 as we previously described (Fig. 1A, lanes 1 and 2) (Kim et al., 2007). We also confirmed that the RNA-mediated interaction between eIF4A and PABP is not inhibited by 15d-PGJ2 treatment, rather 15d-PGJ2 enhance the RNA-mediated interaction between eIF4A and PABP (Fig. S1A). This data is consistent with our previous report that the RNA-binding activity of eIF4A is increased when it binds to 15d-PGJ2 (Kim et al., 2007). In addition, the interaction between eIF4A and eIF4B is not affected by 15d-PGJ2 binding to eIF4A (Fig. S1B). These data suggest that 15d-PGJ2 binding to eIF4A specifically blocks the interaction between eIF4G and eIF4A while promoting its binding to PABP.

It has been known that human eIF4G has two domains, MIF4G (HEAT-1) and MA-3 (HEAT-2) for the interaction with eIF4A (Oberer et al., 2005; Schütz et al., 2008; Imataka and Sonenberg, 1997; Lomakin et al., 2000; Craig et al., 1998; Marintchev et al., 2009) (Fig. 1B). However, it is unknown whether eIF4A interacts with two binding domains of eIF4G through the same surface or different surfaces. To identify which eIF4A interaction domain of eIF4GI is sensitive to 15d-PGJ2's binding to eIF4A, we expressed subdomains of GFP-tagged eIF4GI with FLAG-eIF4A then performed an immunoprecipitation assay using anti-FLAG antibody. The interaction between full-length GFP-eIF4GI and FLAG-eIF4A is inhibited by 15d-PGJ2 treatment as expected (Fig. S1C). The interaction between FLAG-eIF4A and GFP-eIF4GI-MC, which contains both MIF4G and MA3 domain, was significantly inhibited by 15d-PGJ2 (Fig. 1C). When the GFP-eIF4GI-M, which contains only MIF4G domain, was expressed with FLAG-eIF4A, their interaction was also interrupted by 15d-PGJ2 treatment (Fig. 1D). However, the interaction between FLAG-eIF4A and GFP-eIF4GI-C, which contains only MA3 domain, was not affected by 15d-PGJ2 (Fig. 1E). We also tested the effect of 15d-PGJ2 on the interaction between eIF4A and eIF4GII, a paralogue of eIF4GI. However, we could not detect a strong interaction between overexpressed GFP-eIF4GII and FLAG-eIF4A, nor the effect of 15d-PGJ2 on this interaction (Fig. S1D). We also confirmed that the interactions between eIF4A and the binding domains of eIF4GII are not affected by 15d-PGJ2 (Fig. S1E–G). These data suggest that the interaction between the MIF4G domain of eIF4GI, not eIF4GII and eIF4A, is more sensitive to 15d-PGJ2 binding to eIF4A.

To further characterize whether 15d-PGJ2 blocks binding of eIF4A to interactors other than eIF4G, we tested the effect of 15d-PGJ2 on eIF4G homologues containing eIF4A binding domains or on other eIF4A binding partners containing MIF4G or MA3 domains (Fig. 1B). The interactions of eIF4A with PAIP1 or with

DAP5, both of which contain regions similar to the MIF4G domain, were significantly reduced by 15d-PGJ2 (Fig. 1F,G). The interaction of PDCD4, an MA-3 domain containing protein, with eIF4A was slightly affected by 15d-PGJ2 (Fig. 1H). It has been reported that eIF4A interacts with the RNA binding protein RMB4, which does not contain MIF4G or MA3 domains (Lin et al., 2007). The interaction between RMB4 and eIF4A is not inhibited by 15d-PGJ2, rather their interaction was slightly increased when 15d-PGJ2 was added to the binding reaction (Fig. 1I). All these data suggest that 15d-PGJ2 binding to eIF4A specifically blocks the interaction between MIF4G domain and eIF4A.

To further investigate the 15d-PGJ2 interacting residues within eIF4A, we decided to use a computational approach to simulate the interaction between 15d-PGJ2 and the structural model of human eIF4A. Homology modeling, which is template-based modeling, constructs an atomic-resolution model structure of the 'target' protein using its amino acid sequence and its homologous protein structure ('template') obtained from experiments. Homology modeling assumes that the protein structures are more conserved than protein sequences. Practically, the proteins with sequence similarities of more than 30% can be used as templates (Yang and Honig, 2000; Yun, 2012). The method provides accurate models of protein structures, which can be used for the study of protein-protein and protein-ligand docking, of site-directed mutagenesis, and of catalytic mechanism investigation. Docking simulation predicts the orientation of the binding of small molecules (ligands and drug candidates) to their target proteins and infers the affinity and activity of the small molecules (Yuriev and Ramsland, 2013). Therefore, it has played an important role in the rational design of drugs (structure based drug screening). We take advantage of using docking simulation since it samples the conformations of ligands in the binding site of proteins and provides reliable binding modes through assessing the conformations using a scoring function (Vieth et al., 1998).

We used the model structure of 15d-PGJ2 based on a previous study (Fig. 2A–B see Materials and Methods for details) (Pande and Ramos, 2005). Then we built the model structure of human eIF4A-1 based on the crystal structure of MjDEAD from the hyperthermophile *Methanococcus jannaschii* (PDB id; 1HV8) (see the Materials and Methods). The sequence homology between MjDEAD and eIF4A-1 was 33.8% and similarity was 54.4%. We confirmed that nearly all motifs characterizing the DEAD-box helicases in eIF4A were conserved in MjDEAD (Fig. S2A). When we performed the docking simulation, we found that there are nine plausible residues of eIF4A that might interact with 15d-PGJ2 (E257, D261, T262, C264, D265, R295, L400, D404, I406), which are presented as Van der Waals contact surfaces (Fig. 2D and see the Materials and Methods). It is already known that 15d-PGJ2 contains a reactive α,β -unsaturated ketone in the cyclopentenone ring in which an electrophilic carbon is susceptible for Michael addition (Straus and Glass, 2001). Among those amino acid residues of eIF4A that simulations predicted to interact with 15d-PGJ2, only C264 is in proximity to the electrophilic carbon in the head region of 15d-PGJ2 (distance 3.8Å), which is a distance compatible with covalent bonding, to undergo a Michael addition to eIF4A (Fig. 2D). We also confirmed that C264 is located at the most solvent accessible surface among all Cys residues of eIF4A (Fig. 2C), further suggesting that C264 is the likely site of modification with 15d-PGJ2 as we previously reported (Kim et al., 2007).

By analyzing the docking simulation data of 15d-PGJ2-eIF4A, we also found that R295 residue of eIF4A might interact strongly with 15d-PGJ2 and makes the hydrogen bond (Fig. 2D). Thus, we

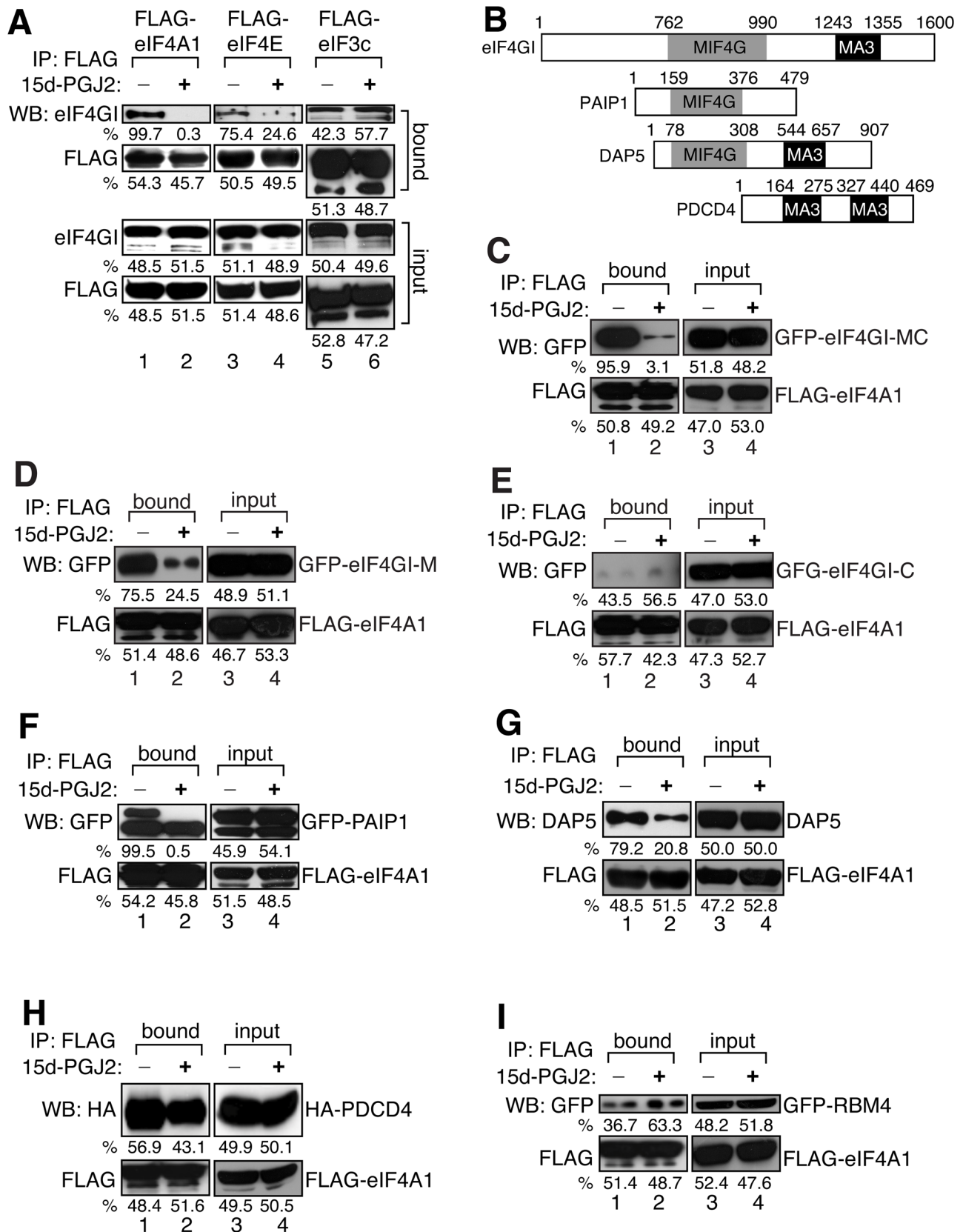


Fig. 1. See next page for legend.

suggest that the hydrogen bond between the tail of 15d-PGJ2 and R295 residue of eIF4A might be responsible in stabilizing the flexible alpha-chain of 15d-PGJ2 and in aiding the chain to dock

easily with eIF4A. This simulation data suggests to us that R295 can be an important target residue as 15d-PGJ2 recognizes eIF4A and binds to it.

Fig. 1. 15d-PGJ2 blocks the interaction between the MIF4G domain of eIF4G with eIF4A. (A) 293T cells were transfected with FLAG-eIF4A1 (lanes 1 and 2), FLAG-eIF4E (lanes 3 and 4), or FLAG-eIF3c (lanes 5 and 6). Cells were lysed then treated with EtOH or 10 μ M of 15d-PGJ2 at 30°C for 1 h. Immunoprecipitation was performed using anti-FLAG antibody then western-blot analysis was performed with anti-FLAG and eIF4GI antibodies. The quantification of the relative band intensity was performed using ImageJ (see the Materials and Methods). Thus, the numbers described below the band indicates the relative percentage of band intensity compared to the neighboring bands. If the intensity of the neighboring bands is exactly same, the values will be 50:50. The same quantification methods are used in all figures unless otherwise specified. (B) eIF4A binding domain structures of eIF4GI homologues were illustrated based on the Pfam graphical view of domain structure (<http://pfam.sanger.ac.uk>). MIF4G domain homologues were marked as grey, MA3 domain homologues as black. (C) 293T cells were co-transfected with GFP-eIF4GI-MC and FLAG-eIF4A1. Cells were lysed then treated with EtOH or 10 μ M of 15d-PGJ2 at 30°C for 1 h. Immunoprecipitation was performed as described above then western-blot analysis was performed with anti-FLAG and anti-GFP antibodies. (D) 293T cells were co-transfected with GFP-eIF4GI-M and FLAG-eIF4A1. Cells were lysed then treated with EtOH or 10 μ M of 15d-PGJ2 at 30°C for 1 h. Immunoprecipitation was performed as described above then western-blot analysis was performed with anti-FLAG and anti-GFP antibodies. (E) 293T cells were co-transfected with GFP-eIF4GI-C and FLAG-eIF4A1. Cells were lysed then treated with EtOH or 10 μ M of 15d-PGJ2 at 30°C for 1 h. Immunoprecipitation was performed as described above then western-blot analysis was performed with anti-FLAG and anti-GFP antibodies. (F) 293T cells were co-transfected with GFP-PAIP1 and FLAG-eIF4A1. Cells were lysed then treated with EtOH or 10 μ M of 15d-PGJ2 at 30°C for 1 h. Immunoprecipitation was performed with an anti-FLAG antibody. Western-blot analysis was performed with anti-FLAG and anti-GFP antibodies. (G) 293T cells were transfected with FLAG-eIF4A1. Cells were lysed then treated with EtOH or 10 μ M of 15d-PGJ2 at 30°C for 1 h. Immunoprecipitation was performed as described above then western-blot analysis was performed with anti-FLAG and anti-DAP5 antibodies. (H) 293T cells were co-transfected with HA-PDCD4 and FLAG-eIF4A1. Cells were lysed then treated with EtOH or 10 μ M of 15d-PGJ2 at 30°C for 1 h. Immunoprecipitation was performed as described above then western-blot analysis was performed with anti-FLAG and anti-HA antibodies. (I) 293T cells were co-transfected with GFP-RBM4 and FLAG-eIF4A1. Cells were lysed then treated with EtOH or 10 μ M of 15d-PGJ2 at 30°C for 1 h. Immunoprecipitation was performed as described above then western-blot analysis was performed with anti-FLAG and anti-GFP antibodies.

Next, we tested whether the relationship between C264 and R295 is conserved through evolution. It is known that the residues that play structurally or functionally important roles within proteins are evolutionary conserved and have high covariance values (Lockless and Ranganathan, 1999; Süel et al., 2003). To investigate the functional importance of C264 and R295, we calculated the covariance value for all residue pairs using homologues of human eIF4A1 (Fig. S2C) (see the Materials and Methods). The histogram of cumulative counts shows that most pairs of residues have no strong correlations, however the covariance value of the C264-R295 pair is within the top 10% in eIF4a (Fig. S2B). This result suggests that both C264 and R295 participate together in an important biological function that may include binding to 15d-PGJ2.

To experimentally confirm the structural relevance of the interaction between C264/R295 of eIF4A and 15d-PGJ2, we generated a C264S and R295A mutant of eIF4A. Binding of R295A mutant with 15d-PGJ2 is not reduced compared with wild-type (WT) eIF4A, rather it increased slightly (Fig. 3A, lanes 1 and 3). However, the binding of 15d-PGJ2 with C264S/R295A double mutant of eIF4A is significantly reduced compared with C264S mutant of eIF4A (Fig. 3A, lane 4), suggesting that R295 region has an additive function in stabilizing the interaction between 15d-PGJ2 and eIF4A.

Next, we tested the effect of R295A mutation on the interactions between eIF4A and eIF4GI, which is inhibited by the binding of 15d-PGJ2 to eIF4A. The binding of C264S mutant eIF4A to eIF4GI was comparable to WT eIF4A (lane 3 of Fig. 3B). However, the inhibitory effect of 15d-PGJ2 was dramatically reduced by that mutation (lanes 3 and 4 of Fig. 3B). The binding of R295A mutant eIF4A to eIF4GI was comparable to WT eIF4A (lane 5 of Fig. 3B), and the inhibitory effect of 15d-PGJ2 was also similar to WT (lanes 5 and 6 of Fig. 3B). When we tested the interaction between C264S/R295A double mutant eIF4A and eIF4GI, we found a slight decrease in the interaction (lane 7 of Fig. 3B). This interaction was not inhibited by 15d-PGJ2 treatment, suggesting that 15d-PGJ2 cannot bind to double mutant eIF4A and thus cannot block its interaction with eIF4G (lanes 7 and 8 of Fig. 3B). All these data suggest that R295 of eIF4A is an important target residue for 15d-PGJ2, which can regulate the interactions between eIF4A and eIF4GI.

To test the role of C264 and R295 residues of eIF4A in 15d-PGJ2-mediated physiological responses, we measured the numbers of SGs in transfected cells with different eIF4A constructs. We previously identified that the anti-inflammatory effect of 15d-PGJ2 partly results from inhibition of translational initiation (Kim et al., 2007) and SG formation are a good indicator of translational initiation blockage. We decided to compare the effect of sodium arsenite (SA) on SG formation to that of 15d-PGJ2 since the SG-inducing-mechanisms of these two agents are distinct (Kim et al., 2007). SA induces SG formation via phosphorylation of eIF2 α , which inhibits efficient GDP-GTP exchange, leading to a decrease in levels of translationally competent eIF2/GTP/tRNA^{Met} ternary complex, and inhibits translation initiation. In contrast to SA, 15d-PGJ2-dependent SG formation is independent of eIF2 α phosphorylation. Rather it targets eIF4A and inhibits the interaction between eIF4A-eIF4G, leading to inhibition of translation initiation (Panas et al., 2016).

We found that SA-induced SG formation is not affected either by WT or double-mutant eIF4A overexpression (Fig. 3C), indicating that SA-dependent – in other words – eIF2 α -dependent SG formation is not affected by any forms of eIF4A overexpression. However, when the WT eIF4A was overexpressed, it could reduce the formation of SGs induced by 15d-PGJ2 up to 20% (lane 2 of Fig. 3D). When the mutant forms of eIF4As that do not bind to 15d-PGJ2 were overexpressed, 15d-PGJ2-dependent SG formation was reduced by up to 90% (Fig. 3D). These data suggest that 15d-PGJ2-dependent SG formation is highly dependent on its binding to the C264 and R295 residues of eIF4A.

C264 of eIF4A is highly conserved from worm to human

eIF4A and mechanisms of translation initiation are conserved across many species. If 15d-PGJ2 regulation of eIF4A is important across species then its binding sites on eIF4A should be conserved. To define the evolutionary importance of these two amino acids in eIF4A, we compared the 15d-PGJ2 binding region of eIF4A among various species from budding yeast to human (Fig. S2C). In most species, C264 of eIF4A is highly conserved, however, in budding yeast *Saccharomyces cerevisiae*, C264 is converted into tryptophan (Fig. S2C). In *Drosophila melanogaster* and *Caenorhabditis elegans*, R295 is converted into histidine and asparagine, respectively (Fig. S2C). Thus, we suggest that C264 and R295 of eIF4A are relatively conserved through various species due to the 15d-PGJ2 actions in inflammation, partly through translational blockage.

We next decided to examine the effect of 15d-PJ2 on various species showing the different amino acid pairs in the eIF4A region.

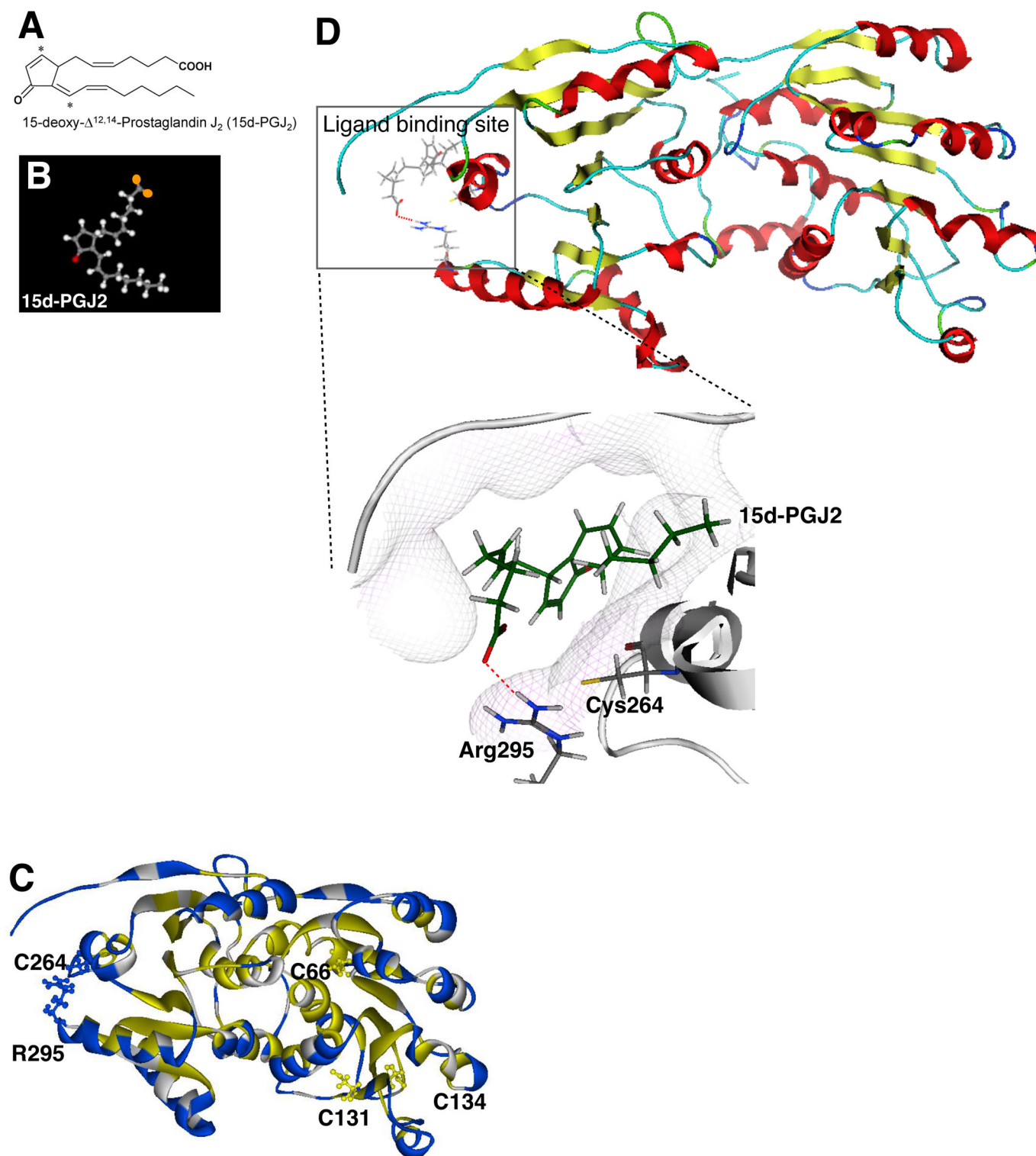


Fig. 2. Carboxyl tail of 15d-PGJ₂ interacts with R295 of eIF4A in docking simulation. (A) 2D structure of 15d-PGJ₂. Image is from a previous paper (Diers et al., 2010). (B) 3D structure of 15d-PGJ₂. The head region of 15d-PGJ₂ contains the reactive α,β -unsaturated ketone structure in red. The carboxyl terminal of tail region in orange. (C) Homology model of human eIF4A-1 based on the crystal structure of MjDEAD (PDB ID: 1HV8). The Cys residues of eIF4A are marked. C264 and R295 are solvent accessible residues and other cysteines (C66, C131, C134) are buried residues. Solvent accessible residues and the buried residues are colored in blue and yellow, respectively. (D) The result of docking simulation between eIF4A and 15d-PGJ₂. The ligand binding site of eIF4A is highlighted inside the box. The hydrogen bonds between R295 of eIF4A and carboxyl tail of 15d-PGJ₂ are presented as a dotted red line.

To test the possible action of 15d-PGJ₂ on translational blockages through eIF4A among various species, we chose several species and performed a series of experiments. First, we treated zebrafish

embryos with 15d-PGJ₂ at an early stage (4 hpf, hours post fertilization) and found that it resulted in gastrulation defects. We introduced two molecular markers, *chd*, as an involuting dorsal

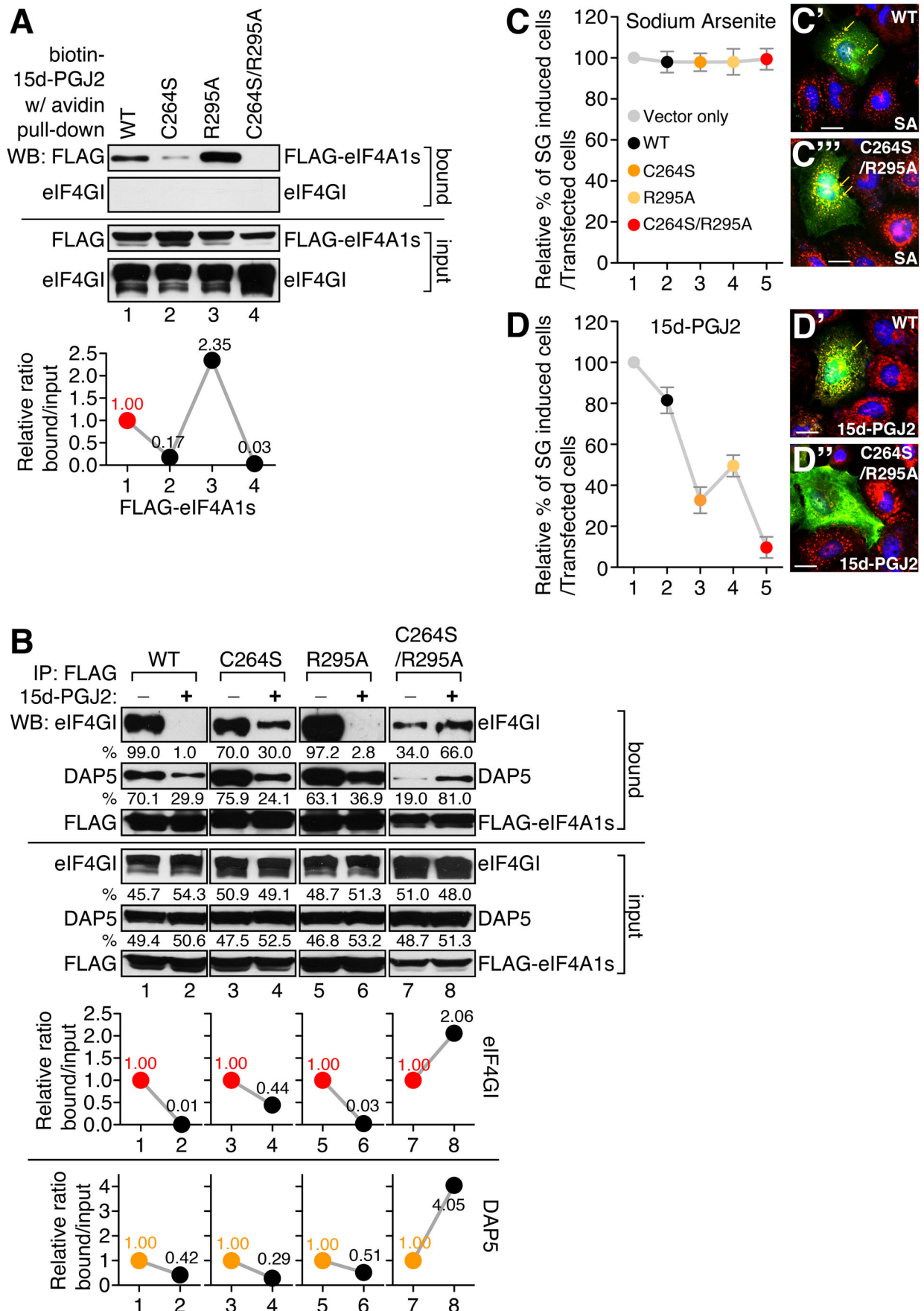


Fig. 3. See next page for legend.

Fig. 3. Binding of 15d-PGJ2 to arginine 295 of eIF4A is important for interaction with eIF4G and stress granule (SG) formation. (A) 293T cells were transfected with the WT (lane 1) or mutant (lanes 2–4) FLAG-eIF4A1s. Biotin pull-down assay was performed using biotin-15d-PGJ2 as described in the Materials and Methods. Western-blot analysis was performed with anti-FLAG and anti-eIF4G1 antibodies. The bands of each lane are quantified using ImageJ as described in the Materials and Methods. Then the relative ratio of bound/input is calculated and visualized as a graph below the band. (B) 293T cells were transfected with the WT (lanes 1 and 2) or mutant (lanes 3–8) FLAG-eIF4A1. Immunoprecipitation was performed in the absence or presence of 15d-PGJ2 as described in the Materials and Methods. Western-blot analysis was performed with anti-FLAG, anti-DAP5, anti-eIF4G1 antibodies. The bands of each lane were quantified using ImageJ as described in the Materials and Methods. Then the relative ratio of bound/input is calculated and visualized as graph below the band. (C,D) HeLa cells were grown on cover slips and transfected with a FLAG vector, WT eIF4A, or mutant eIF4As (C264S, R295A and C264S/R295A). After 48 h of incubation, cells were treated with the 400 μ M of SA (C) or 100 μ M of 15d-PGJ2 (D) for 30 min. Cells were fixed and immunocytochemical analyses were performed with anti-FLAG and anti-eIF3b antibodies. SGs were counted among FLAG-eIF4As transfected cells. Each circle was normalized with vector transfectant. (C',C'',D',D'') Samples counted in panels C and D were visualized. FLAG-eIF4As are green, eIF3B is red. The nuclei are shown in blue by Hoechst staining. SGs are marked as yellow arrows. Scale bars: 30 μ m.

mesoderm marker and *myod*, as an adaxial and somite marker (Fig. 4A, right panels). In addition, zebrafish embryos treated with 15d-PGJ2 at a later stage (10 hpf) showed a severe defect in spinal cord development at 28 hpf (Fig. 4A, red dashed lines in bottom panels).

Second, to understand the function of eIF4A in 15d-PGJ2-mediated translational modulation, we chose *Xenopus* embryos to genetically manipulate the expression of eIF4A and its mutant forms. We found that *Xenopus* embryos also showed developmental defects when treated with 15d-PGJ2 (Fig. 4B). When 15d-PGJ2 was administered at a later developmental stage in *Xenopus*, most of the animals showed growth retardation, mild eye loss or severe eye loss (Fig. 4C, bottom panels and Fig. S4A) compared with mock-treated animals, or animals treated with a control prostaglandin (PGE2) or GW9662, potent PPAR- γ antagonist. Interestingly, developmental defects induced by 15d-PGJ2 were rescued by eIF4A mRNA injection (Fig. 4D). Inhibition of developmental defects by eIF4A mRNA injection might be a result of buffering 15d-PGJ2 with overexpressed eIF4A (Fig. S4B). In addition, C264S mutant eIF4A mRNA injection almost completely rescued the developmental defect induced by 15d-PGJ2, suggesting that the binding motif of 15d-PGJ2 in eIF4A is critical for this developmental defect (Fig. 4D).

Third, we moved to test the effect of 15d-PGJ2 in invertebrate models. The eIF4A of fruit fly contains C264/H295 (Fig. S2C). We found that *Spodoptera frugiperda*-derived Sf9 cells form SG-like structures by SA and 15d-PGJ2 using antibodies against eIF4A and RNA binding protein, HuR (Fig. 4E, yellow arrows on the right panel). By searching the sequencing database Blast, we found that the 15d-PGJ2 binding sites of eIF4A in *S. frugiperda* are conserved as C264/R295 form (Fig. S4C). To confirm the effect on the cap-dependent translation of Sf9 cells by these chemicals, we transfected dual luciferase mRNA in Sf9 cell line then treated them with either SA or 15d-PGJ2. Interestingly, we found a strong correlation between luciferase assay and immunocytochemical data (Fig. 4F), indicating that 15d-PGJ2 can affect cap-dependent translation in insect cells. It has been reported that metazoan SG assembly is mediated by P-eIF2 α -dependent and -independent mechanisms (Farny et al., 2009), which is consistent with our data

(Fig. 4E,F). The phosphorylation of eIF2 α induces stress signals in Sf9 cells (Aarti et al., 2010), which is also consistent with our data (Fig. 4E,F). All these data and reports suggest that 15d-PGJ2 can induce SG formation resulting in inhibited cap-dependent translation in invertebrate cells that contain conserved eIF4A amino acid residues for binding to 15d-PGJ2.

CONCLUSION

Here we showed that the specific effect of 15d-PGJ2 on eIF4A is dependent on conservation of C264 and amino acid residues in 295 position. First we showed that the binding of 15d-PGJ2 to eIF4A mostly blocks the interaction between the MIF4G domain of eIF4G and eIF4A. We showed that the interactions between eIF4E–eIF4G, eIF3–eIF4G, eIF4G–PABP and eIF4A–eIF4B were not affected by 15d-PGJ2 treatments (Fig. 1A; Fig. S1A–B). It is known that eIF4G contains two eIF4A binding motifs, MIF4G and MA3 domain. Using a domain mapping strategy, we showed that the MIF4G domain is responsible for the inhibitory effect on the interactions between eIF4A and eIF4G1 by 15d-PGJ2 (Fig. 1C–E; Fig. S1C–G). We also successfully showed that binding of 15d-PGJ2 to eIF4A inhibits the interaction between MIF4G domain and eIF4A by using various eIF4G homologues and eIF4A binding partners (Fig. 1F–I). Using a docking study, we identified that C264 of eIF4A can be accessible to 15d-PGJ2 (Fig. 2C) and found a clue that the tail of 15d-PGJ2 may be located very close to R295 of eIF4A (Fig. 2C). Although it is known that thiol modification of 15d-PGJ2 is enough for direct binding to its targets, we suggest that the tail of 15d-PGJ2 can stabilize or initiate the binding to targets. We next confirmed the predictions of our computer docking simulation with experiments. Our data suggest that R295 of eIF4A plays a critical role to stabilize the binding of 15d-PGJ2 and eIF4A (Fig. 3). To confirm that the conservation of C264/R295 plays an important role in translational regulation (Fig. S2B), we treated a variety of species with 15d-PGJ2 (Fig. S2C). We found interesting relations between C264/R295 conservation and 15d-PGJ2-mediated cell growth inhibition, translational inhibition, and/or SG formation (Fig. 4; Fig. S4). In summary, our study shows that 15d-PGJ2 specifically binds to C264/R295 residues of eIF4A and these binding properties are related to 15d-PGJ2-mediated translational inhibition.

Powerful computational simulation-based docking studies are widely used to design and modify drugs. Using this technique, we could predict that the carboxyl tail of 15d-PGJ2 binds close to the R295 of eIF4A. As we predicted, previous reports by other groups also suggested that the carboxyl group of 15d-PGJ2 makes strong hydrogen-bonding interactions through lysine or arginine of target proteins (Pande and Ramos, 2005). Moreover, the carboxyl of PG-like fatty acids has been experimentally considered as an important determinant for molecular recognition with their natural receptors (Nolte et al., 1998; Xu et al., 1999). A previous study of eIF4A showed that D265 and D296 play a key role in its binding to eIF4G (Oberer et al., 2005). The crystal structure of the yeast eIF4A–eIF4G complex revealed that eIF4G-S612 makes a hydrogen bond with eIF4A-T252 [corresponding to C264 in human eIF4A (Oberer et al., 2005)] and eIF4G-E628 and D595 form a salt bridge with eIF4A-K284 [corresponding to D296 in human eIF4A (Oberer et al., 2005; Schütz et al., 2008)]. Whether the function of the 15d-PGJ2 tail is to affect stabilization or initiation of binding to eIF4A before covalent modification is not known, our experimental data shows that R295 of eIF4A is important for the binding of 15d-PGJ2 (Fig. 3). Since 15d-PGJ2 has multiple targets (Pande and Ramos, 2005), a docking study and experimental studies with these targets will be required to

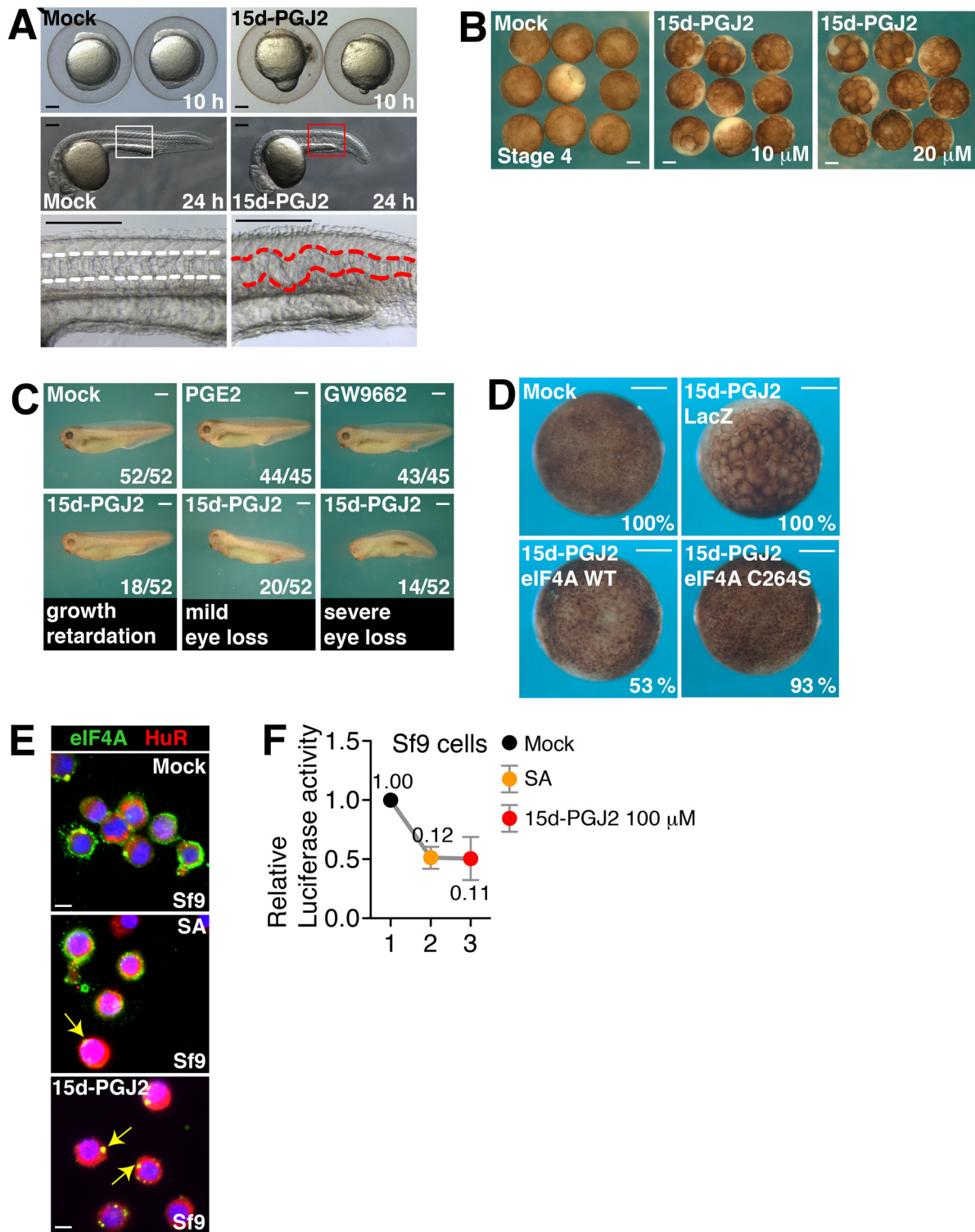


Fig. 4. See next page for legend.

confirm the role of the 15d-PGJ2 tail region in interactions with other targets.

What is the implication of these molecular interactions on translational regulation? There are several interesting perspectives provided by the molecular details from our study. First, our data suggest that the binding of 15d-PGJ2 to eIF4A shows highly specific effects on cellular physiology. For example, it only affects

the translational initiation step thus inducing SG formation. The binding of 15d-PGJ2 to eIF4A only blocks the interactions between eIF4G–eIF4A, not eIF4E–eIF4G, eIF3–eIF4G, or eIF4A–eIF4B (Fig. 1A; Fig. S1B). Rather, 15d-PGJ2 binding to eIF4A increases the interactions between eIF4A and RNA (Kim et al., 2007), thus resulting in increases in the interactions between eIF4A and PABP (Fig. S1A), which accounts for the RNA-mediated interaction.

Fig. 4. The effect of 15d-PGJ2 on various species. (A) Zebrafish embryos were mock treated or treated with 10 μM of 15d-PGJ2 at two different developmental stages (4 hpf or 10 hpf) and examined at later stages. 15d-PGJ2 treatment caused a gastrulation defect at an early stage (6ss, 6 somite stage) and spinal cord defects at a later stage (28 hpf), respectively. Early effects of 15d-PGJ2 were confirmed by using two molecular markers: *chd* (85% epiboly stage; L, lateral view; D, dorsal view) and *myod* (8ss, dorsal view). (B) *Xenopus* embryos were mock treated or treated with 20 μM of 15d-PGJ2 from stage 4 and cultured until gastrula stage (stage 11). Note that embryos treated with 15d-PGJ2 were developmentally arrested at early blastula stage. (C) *Xenopus* embryos were mock treated or treated with 20 μM of 15d-PGJ2, PGE2, or GW9662 after the onset of gastrulation (stage 11). Phenotypes were counted at stage 35. Among 52 embryos treated with 15d-PGJ2, 18 were growth retarded as shown by reduced trunk pigmentation and delayed eye formation, 20 showed mild eye defects, and 14 showed loss of eye and defects in dorsal axis. (D) *Xenopus* embryos were injected with β -galactosidase mRNA, eIF4A mRNA, or eIF4A C264S mutant mRNA at stage 2 and mock treated or treated with 20 μM of 15d-PGJ2 from 16-cell or 32-cell stages. Embryos were cultured until stage 11 and fixed. β -galactosidase mRNA injection or mock treatment was performed for the negative control. eIF4A injection rescued developmental arrest induced by 15d-PGJ2 administration (9/17, 53%), as well as did eIF4A C264S injections (14/15, 93%). (E) Sf9 cells were grown on cover slips and mock-treated (top panel), treated with 400 μM of SA (middle panel), or 50 μM of 15d-PGJ2 (bottom panel). Immunocytochemical analyses were performed with anti-eIF4A1 (green) and anti-HuR (red) antibodies. The nuclei are shown in blue by Hoechst staining. (F) Sf9 cells were co-transfected with monocistronic mRNAs containing renilla luciferase with cap-structure and firefly luciferase with CrPV IRES. After 4 h of transfection, cells were mock treated (lane 1), treated with 400 μM of SA (lane 2), or 100 μM of 15d-PGJ2 (lane 3) for 1 h. Luciferase assay was performed and relative luciferase activity was shown. Rluc/Fluc ratio means eIF4A dependent translation. Scale bars: 30 μm .

Interestingly, the helicase activity of eIF4A was not altered by 15d-PGJ2 treatment (Fig. S3), indicating that the binding of 15d-PGJ2 to eIF4A specifically blocks its interactions with eIF4G.

It has been identified that MIF4G domain (also called the HEAT-1 domain) is mainly responsible for the binding of eIF4G to the eIF4A C-terminus (237-406) (Marintchev et al., 2009). We also found that 15d-PGJ2 treatment only blocks the interactions between eIF4A and eIF4GI, PAIP1, and DAP5 but not the interactions between eIF4A-PDCD4 and eIF4A-eIF4GII. PDCD4 is a newly characterized tumor suppressor gene and functions by isolating eIF4A from eIF4F complexes (Yang et al., 2003). If 15d-PGJ2 only blocks translation through the MIF4G domain but not the function of PDCD4, the anti-proliferative effect of 15d-PGJ2 and PDCD4 may be cumulative within cells. The interactions between eIF4A-eIF4GII was relatively weak and not affected by 15d-PGJ2 treatment (Fig. S1C-G). eIF4GI and eIF4GII have differing functions, as reported by other groups (Svitkin et al., 1999), however, we are unsure why 15d-PGJ2 may not bind to eIF4GII. Further study is required to find the molecular details of this phenomenon.

Cyclopentenone prostaglandins are produced at the late stage of inflammatory responses to stop the positive feedback loop and prevent sustained inflammation (Straus et al., 2000; Straus and Glass, 2001). Previously, we suggested that the anti-inflammatory action of 15d-PGJ2 partially resulted from translational inhibition. We also suggested that eIF4A is a possible candidate for that function of 15d-PGJ2 (Kim et al., 2007). If this were the case, C264 of eIF4A would be critical for 15d-PGJ2 actions. Evolutionary conservation of the C264 of eIF4A among mammals and many multicellular organisms motivated us to test this possibility (Fig. S2C). From mammals to insects, 15d-PGJ2 inhibited cap-dependent translation (Fig. 4A), induced SG-like structures (Fig. 4E), or disrupted development (Fig. 4A-D). We cannot conclude that all these phenomena result

from 15d-PGJ2 effects on eIF4A; however, 15d-PGJ2 treatment of *Xenopus* embryos with eIF4A mRNA could prevent developmental defects induced by 15d-PGJ2 (Fig. 4D). We also confirmed that a C264S mutant eIF4A, which is resistant to 15d-PGJ2, can rescue the developmental delay better than WT eIF4A, suggesting that the binding specificity of 15d-PGJ2 to C264 of eIF4A is critical for developmental delays in *Xenopus* embryo. Thus, overexpression of eIF4A can rescue the developmental defects induced by 15d-PGJ2 at least in *Xenopus* embryos.

15d-PGJ2 is synthesized through the dehydration of PGD2. PGD2 synthesis requires PGD2 synthases: HPGDS (entrezID: 27306) and LPGDS (entrezID: 5730) (Scher and Pillinger, 2005). The existence of PGD2 synthases in the genome of species could be a possible criteria of 15d-PGJ2 production in that species. To test this possibility, we searched for the orthologues of human PGDS using InParanoid (Fig. S5). The orthologues of PGDS are found in mouse, *Xenopus* and *Drosophila* in which C264 is conserved. In those species, 15d-PGJ2 can induce SG-like structures (Fig. 4E), disrupt development (Fig. 3A-D), or inhibit translation (Fig. 4F). In zebrafish, however, orthologues of PGDS were not found though the treatment of 15d-PGJ2 induces developmental defects (Fig. 4A). This suggests the possible existence of different enzymes producing PGD2 in zebrafish. Although there is the exceptional case, as with zebrafish, the effect of 15d-PGJ2 seems to be correlated with the existence of PGDS in the genome of the species.

Our findings can provide the strategy to design more efficient drugs. For example, covalent modification of HIV Tat protein by 15d-PGJ2 can be applied to design anti-viral drugs. Since 15d-PGJ2 has specific cellular target proteins, finding targets and designing more efficient structures will be helpful for medical applications such as Ischemia reperfusion (Blanco et al., 2005; DeGracia et al., 2006; Kayali et al., 2005; Murry et al., 1986; Kloner and Rezkalla, 2006; McDunn and Cobb, 2005; Lin et al., 2006). Together with small molecules showing anti-cancer effects such as Pateamine A and 4EGI-1 (Korneeva et al., 2001), we suggest that targeting the process of translational initiation could be a reasonable strategy to improve anti-cancer and anti-inflammatory treatments.

MATERIALS AND METHODS

Statement on animal research

Research using animals (*Xenopus*) has made, and continues to make, a vital contribution to the understanding, treatment and cure of major human and animal health problems, including cancer, heart disease, polio, diabetes and neurological diseases and disorders. While new methods have enabled scientists and medical researchers to reduce the number of studies involving animals, some work must continue for further fundamental advances to be made.

The POSTECH only uses animals in research where there are no alternatives. In fact, the law demands that where a non-animal approach exists, it should be used. The principles of reduction, refinement and replacement of animals in research (the '3Rs') underpin all related work carried out at the University, ensuring that the number of animals used is minimized and that procedures, care routines and husbandry are refined and regularly reviewed to maximize welfare.

Plasmid construction

Plasmid information is described elsewhere (Kim et al., 2007, 2005). Site-directed mutagenesis was performed by *DpnI* selection method using proper primers. All plasmids are sequenced to confirm the mutagenesis.

Antibodies and chemicals

Antibody against FLAG was purchased from Sigma-Aldrich, GFP and HA from Santa Cruz Biotechnology. Antibody against eIF4GI was prepared in our laboratory (Kim et al., 2005). Chemicals 15d-PGJ2, biotinylated 15d-PGJ2 and PGE2 were purchased from Cayman Chemical. Sodium arsenite

was purchased from Sigma-Aldrich. Immobilized streptavidin agarose was purchased from Pierce.

Quantification of western blot analysis

We quantified the density of bands using ImageJ (<http://rsb.info.nih.gov/ij/index.html>) software. We created digital images of gels using a digital scanner then followed the protocol for gel analysis menu in ImageJ (Schneider et al., 2012). In short, we converted gel images to 8-bit images then chose the rectangular selections tool to draw a rectangle around the first each lane. After drawing the rectangles, we plotted lanes using the plot lanes menu then chose the peak using the straight line selection tool. When all the peaks were highlighted, we labeled peaks to express the percentage of each peak compared to the total size of all the highlighted peaks. The quantification method used above is described elsewhere (Tan and Ng, 2008; Gassmann et al., 2009).

Cell cultures and transient transfection

HeLa cells and 293T cells were grown as described elsewhere (Kim et al., 2005).

Pull-down with streptavidin and immunoprecipitation

Biotin pull-down and immunoprecipitation experiments were performed as described elsewhere (Kim et al., 2007). In short, 293T cells transfected with DNA were lysed using the NP-40 lysis buffer. The lysates were clarified by centrifugation at 14,000 *g* for 15 min. Anti-FLAG monoclonal antibody (4 μ g) was incubated with 20 μ l of protein G agarose for 1 h in 1 ml NP-40 lysis buffer at 4°C. Lysates were pre-cleared with 10 μ l of protein G agarose at 4°C for 30 min. After pre-clearing, cell lysates were treated with 50 μ M of EtOH, PGE₂, or 15d-PGJ₂ at 30°C for 1 h, followed by centrifugation. Then protein G agarose-conjugated antibodies were incubated with the pre-cleared lysates at 4°C for 1 h. Precipitates were washed three times with lysis buffer and analyzed by SDS-PAGE.

Fluorescence microscopy

The immunocytochemical analyses of proteins were performed as described elsewhere (Kim et al., 2005). In short, after transfection of DNA, cells were grown on coverslips coated with 0.2% gelatin for 48 h and then washed three times with phosphate-buffered saline (PBS). The cells were fixed with 3.5% (wt/vol) paraformaldehyde (Sigma-Aldrich) at room temperature (RT) for 12 min. After being washed three times with PBS, the cells were permeabilized with 0.1% Triton X-100 at RT for 2 min and then washed three times with PBS. The samples were soaked in blocking solution (PBS containing 1% bovine serum albumin) for 30 min at RT and then incubated with primary antibodies for 1 h at RT. After being washed with PBS, the samples were treated with Hoechst 33258 for 2 min at RT and washed again with PBS three times. Samples were treated with rhodamine tetramethyl isocyanate-conjugated and/or fluorescein isothiocyanate-conjugated secondary antibodies (Jackson ImmunoResearch) for 1 h at RT. Finally, the coverslips were washed three times with PBS, placed on a glass slide, and then sealed with transparent nail polish. The fluorescent images were captured with a cooled charge-coupled device camera and a Zeiss (Jena, Germany) Axioplan microscope. Data were processed using ImageJ software.

Luciferase assay

Luciferase assays were performed as described elsewhere (Kim et al., 2005). In short, monocistronic mRNAs containing *renilla* luciferase with cap-structure, and firefly luciferase with CrPV IRES were transfected together into Sf9 cells by lipopectamine. After 12 h of transfection, SA or 15d-PGJ₂ was added to cells for 1 h then luciferase assays were performed with a dual luciferase assay kit (Promega) per the manufacturer's instructions. *Renilla* luciferase activity values were normalized by firefly luciferase activity values that reflect transfection efficiency and general cellular activities.

Insect cell cultures

BTI-TN-5B1-4 cells (High Five; Invitrogen) were maintained and transfected as described elsewhere (Farrell and Iatrou, 2004). Monocistronic Rluc and Fluc plasmids are described elsewhere (Kim et al., 2007).

Xenopus embryo manipulation

Xenopus eggs were obtained and fertilized as described elsewhere (Kim and Han, 2007). Nieuwkoop and Faber stages were considered for the *Xenopus* developmental staging (Nieuwkoop and Faber, 1956). *In vitro* synthesized eIF4A mRNA was introduced into the *Xenopus* embryos by microinjection using Nanolitre injector (WPI). Embryos were cultured in 0.33X-modified ringer (MR) and treated with 20 μ M of 15d-PGJ₂ or GW9662 from the indicated stages.

Zebrafish experiment

Zebrafish were maintained at 28.5°C in a 14 h light/10 h dark cycle. Embryonic stages were determined by the hours post fertilization (hpf) and microscopic observation. Zebrafish embryos were treated with 10 μ M of 15d-PGJ₂ at two different developmental stages, 4 hpf (before gastrulation) and 10 hpf (after gastrulation), respectively. Wholemount *in situ* hybridization was performed as previously described (Jung et al., 2010).

Homology modeling and docking

Crystal structure (1HV8) of MjDEAD extracted from the hyperthermophile *M. jannaschii* is used as a template to build the homology model of the human eIF4A1 (Oberer et al., 2005) using Modeller8v (Sali and Blundell, 1994). MjDEAD and human eIF4A1 share high sequence identity and similarity, 33.8% and 54.4%, respectively. The sequence alignment between human eIF4A-1 and MjDEAD was performed using ClustalW (Chenna et al., 2003) and the alignment score was calculated from EMBOSS-align (Rice et al., 2000). C α RMSD was calculated using MOE (Chemical Computing Group, 2008). The model structure of eIF4A-1 was energy-minimized using AMBER9 (Case et al., 2006). Since CYS is oxidized in the experimental environment, CYM potential parameters were used for CYS in the energy-minimized. We docked 15d-PGJ₂ into the human eIF4A-1 model structure using eHiTS (Kerwin, 2005). eHiTS considers the flexibility of the ligand and generates all possible ligand conformations, which has proven to be effective for modeling a ligand docking model. Before docking, 15d-PGJ₂ was energy-minimized by *ab initio* quantum chemical calculation using Gaussian program (Frisch et al., 2004). The energy-minimized 15d-PGJ₂ was docked to the eIF4A-1 model.

Calculation of covariance

We found 500 homologues of the human eIF4A-1 using wu-BLAST and filtered out 197 sequences whose length is smaller than 0.7 times or larger than 1.4 times of human eIF4A sequence and whose identity is greater than 90%. We removed all columns with gaps more than 50%. Finally, 303 selected sequences were aligned with human eIF4A sequences and the co-variance was calculated using ELS (Dekker et al., 2004; Fodor and Aldrich, 2004).

Conserved C-R pair in vertebrate orthologues of human eIF4A-1

We aligned 11 orthologues of human eIF4A-1 from InParanoid, Eukaryotic Ortholog Groups (Remm et al., 2001), using ClustalW.

Searching orthologues of PGDS

We search InParanoid, the Eukaryotic Ortholog Groups, for the orthologues of human PGDS (Remm et al., 2001), excluding inparalogues scoring below 0.05.

Helicase assay

We performed *in vitro* helicase assay using 32P-labeled oligonucleotides as described elsewhere (Kim and Seo, 2009). The oligonucleotide sequences we used are described below. R-28-5'; 28mer: aaacaacaacaaaagaccaccgaaagc and R-13; 13mer: gcuuuacggugcu.

Acknowledgements

We are grateful to the members of Pohang Biology Group (PBG) for the generous provision of advice and discussion. We also appreciate Dr Derrick Gibbings (University of Ottawa) for his reading and reviewing this manuscript carefully. We also would like to thank Dr Hyesik Jang (Seoul National University) for finding the sequences of eIF4A from the *S. frugiperda* sequencing database. Zebrafish were obtained from the Zebrafish Center for Disease Modeling (ZCDM).

Competing interests

The authors declare no competing or financial interests.

Author contributions

Conceptualization: S.J.Y., W.J.K.; Methodology: S.J.Y., W.J.K.; Software: S.J.Y., W.J.K.; Validation: W.J.K.; Formal analysis: J.-K.H., C.-H.K., S.K., S.K.J., W.J.K.; Investigation: H.K., S.-H.J., J.H.K., J.E.R., N.J.S., J.J., J.-K.H., C.-H.K., S.K.J., W.J.K.; Resources: H.K., S.-H.J., J.H.K., J.E.R., N.J.S., J.J., J.-K.H., C.-H.K., S.K.J., W.J.K.; Data curation: S.J.Y., H.K., S.-H.J., J.H.K., J.E.R., N.J.S., J.J., J.-K.H., C.-H.K., S.K.J., W.J.K.; Writing - original draft: S.J.Y., W.J.K.; Writing - review & editing: S.J.Y., W.J.K.; Visualization: W.J.K.; Supervision: W.J.K.; Project administration: W.J.K.; Funding acquisition: W.J.K.

Funding

This work was supported by the National Research Foundation of Korea (2010-0020414, WCU: R32-2008-000-10180-0) and the Korea Institute of Science and Technology Information (KSC-2011-G3-02).

Supplementary information

Supplementary information available online at <http://bio.biologists.org/lookup/doi/10.1242/bio.035402.supplemental>

References

- Aarti, I., Rajesh, K. and Ramaiah, K. V. A. (2010). Phosphorylation of eIF2 alpha in Sf9 cells: a stress, survival and suicidal signal. *Apoptosis* **15**, 679-692.
- Blanco, M., Moro, M. Á., Dávalos, A., Leira, R., Castellanos, M., Serena, J., Vivancos, J., Rodríguez-Yáñez, M., Lizasoain, I. and Castillo, J. (2005). Increased plasma levels of 15-deoxy Δ prostaglandin J2 are associated with good outcome in acute atherothrombotic ischemic stroke. *Stroke* **36**, 1189-1194.
- Case, D. A., Darden, T. A., Cheatham, T. E., III, Simmerling, C. L., Wang, J., Duke, R. E., Luo, R., Merz, K. M., Pearlman, D. A., Crowley, M. (2006). AMBER 9. Univ California, San Fr 45.
- Chemical Computing Group MOE. (2008). Molecular Operating Environment.
- Chenna, R., Sugawara, H., Koike, T., Lopez, R., Gibson, T. J., Higgins, D. G. and Thompson, J. D. (2003). Multiple sequence alignment with the Clustal series of programs. *Nucleic Acids Res.* **31**, 3497-3500.
- Craig, A. W.B., Haghghat, A., Annie, T. K. and Sonenberg, N. (1998). Interaction of polyadenylate-binding protein with the eIF4G homologue PAIP enhances translation. *Nature* **392**, 520-523.
- DeGracia, D. J., Rafols, J. A., Morley, S. J. and Kayali, F. (2006). Immunohistochemical mapping of total and phosphorylated eukaryotic initiation factor 4G in rat hippocampus following global brain ischemia and reperfusion. *Neuroscience* **139**, 1235-1248.
- Dekker, J. P., Fodor, A., Aldrich, R. W. and Yellen, G. (2004). A perturbation-based method for calculating explicit likelihood of evolutionary co-variance in multiple sequence alignments. *Bioinformatics* **20**, 1565-1572.
- Diers, A. R., Dranka, B. P., Ricart, K. C., Oh, J. Y., Johnson, M. S., Zhou, F., Paller, M. A., Bodenstine, T. M., Murphy-Ullrich, J. E., Welch, D. R. et al. (2010). Modulation of mammary cancer cell migration by 15-deoxy- Δ 12,14-prostaglandin J2: implications for anti-metastatic therapy. *Biochem. J.* **430**, 69-78.
- Farny, N. G., Kedersha, N. L. and Silver, P. A. (2009). Metazoan stress granule assembly is mediated by P-eIF2 α -dependent and-independent mechanisms. *RNA* **15**, 1814-1821.
- Farrell, P. and Iatrou, K. (2004). Transfected insect cells in suspension culture rapidly yield moderate quantities of recombinant proteins in protein-free culture medium. *Protein Expr. Purif.* **36**, 177-185.
- Fodor, A. A. and Aldrich, R. W. (2004). Influence of conservation on calculations of amino acid covariance in multiple sequence alignments. *Proteins Struct. Funct. Bioinforma.* **56**, 211-221.
- Frisch, M.J., Trucks, G. W., Schlegel, Hb, Scuseria, G. E., Robb, M. A., Cheeseman, J. R., Montgomery, J. A., Jr, Vreven, T., Kudin, K. N. and Burant, J. (2004). Gaussian 03, revision c. 02; Gaussian, Inc, Wallingford, CT 4.
- Gassmann, M., Grenacher, B., Rohde, B. and Vogel, J. (2009). Quantifying Western blots: pitfalls of densitometry. *Electrophoresis* **30**, 1845-1855.
- Imataka, H. and Sonenberg, N. (1997). Human eukaryotic translation initiation factor 4G (eIF4G) possesses two separate and independent binding sites for eIF4A. *Mol. Cell. Biol.* **17**, 6940-6947.
- Jung, S.-H., Kim, S., Chung, A.-Y., Kim, H.-T., So, J.-H., Ryu, J., Park, H.-C. and Kim, C.-H. (2010). Visualization of myelination in GFP-transgenic zebrafish. *Dev. Dyn.* **239**, 592-597.
- Kayali, F., Montie, H. L., Rafols, J. A. and DeGracia, D. J. (2005). Prolonged translation arrest in reperfused hippocampal cornu Ammonis 1 is mediated by stress granules. *Neuroscience* **134**, 1223-1245.
- Kerwin, S. M. (2005). eHiTS 5.1. 6 SimBioSys Inc., 135 Queen's Plate Drive, Unit 420, Toronto, Ontario M9W 6V1, Canada. <http://simbiosys.ca/index.html>. For pricing information, contact company. *J. Am. Chem. Soc.* **127**, 8899-8900.
- Kim, W. J., Kim, J. H. and Jang, S. K. (2007). Anti-inflammatory lipid mediator 15d-PGJ2 inhibits translation through inactivation of eIF4A. *EMBO J.* **26**, 5020-5032.
- Kim, G.-H. and Han, J.-K. (2007). Essential role for β -arrestin 2 in the regulation of Xenopus convergent extension movements. *EMBO J.* **26**, 2513-2526.
- Kim, J.-H. and Seo, Y.-S. (2009). In vitro assays for studying helicase activities. *Methods Mol. Biol.* **521**, 361-379.
- Kim, W. J.W., Back, S. H.S., Kim, V., Ryu, I. and Jang, S. K. (2005). Sequestration of TRAF2 into stress granules interrupts tumor necrosis factor signaling under stress conditions. *Mol Cell* **25**, 2450-2462.
- Kloner, R. A. and Rezkalla, S. H. (2006). Preconditioning, postconditioning and their application to clinical cardiology. *Cardiovasc. Res.* **70**, 297-307.
- Kondo, M., Shibata, T., Kumagai, T., Osawa, T., Shibata, N., Kobayashi, M., Sasaki, S., Iwata, M., Noguchi, N. and Uchida, K. (2002). 15-Deoxy- Δ 12,14-prostaglandin J2: The electrophile that induces neuronal apoptosis 2.
- Korneeva, N. L., Lamphear, B. J., Hennigan, F. L.C., Merrick, W. C. and Rhoads, R. E. (2001). Characterization of the two eIF4A-binding sites on human eIF4G-1. *J. Biol. Chem.* **276**, 2872-2879.
- Lin, T.-N., Cheung, W.-M., Wu, J.-S., Chen, J.-J., Lin, H., Chen, J.-J., Liou, J.-Y., Shyue, S.-K. and Wu, K. K. (2006). 15d-prostaglandin J2 protects brain from ischemia-reperfusion injury. *Arterioscler. Thromb. Vasc. Biol.* **26**, 481-487.
- Lin, J.-C., Hsu, M. and Tarn, W.-Y. (2007). Cell stress modulates the function of splicing regulatory protein RBM4 in translation control. *Proc. Natl. Acad. Sci. USA* **104**, 2235-2240.
- Lockless, S. W. and Ranganathan, R. (1999). Evolutionarily conserved pathways of energetic connectivity in protein families. *Science* **286**, 295-299.
- Lomakin, I. B., Hellen, C. U.T. and Pestova, T. V. (2000). Physical association of eukaryotic initiation factor 4G (eIF4G) with eIF4A strongly enhances binding of eIF4G to the internal ribosomal entry site of encephalomyocarditis virus and is required for internal initiation of translation. *Mol. Cell. Biol.* **20**, 6019-6029.
- Low, W.-K., Dang, Y., Schneider-Poetsch, T., Shi, Z., Choi, N. S., Merrick, W. C., Romo, D. and Liu, J. O. (2005). Inhibition of eukaryotic translation initiation by the marine natural product pateamine A. *Mol. Cell* **20**, 709-722.
- Marintchev, A., Edmonds, K. A., Marintcheva, B., Hendrickson, E., Oberer, M., Suzuki, C., Herdy, B., Sonenberg, N. and Wagner, G. (2009). Topology and regulation of the human eIF4A/4G/4H helicase complex in translation initiation. *Cell* **136**, 447-460.
- McDunn, J. E. and Cobb, J. P. (2005). That which does not kill you makes you stronger: a molecular mechanism for preconditioning. *Sci. STKE* **2005**, pe34.
- Murry, C. E., Jennings, R. B. and Reimer, K. A. (1986). Preconditioning with ischemia: a delay of lethal cell injury in ischemic myocardium. *Circulation* **74**, 1124-1136.
- Nieuwkoop, P. D. and Faber, J. (1956). Normal table of *Xenopus laevis* (Daudin). A systematic and chronological survey of the development from the fertilized egg till the end of metamorphosis. Norm table *Xenopus laevis* (Daudin) A Syst Chronol Surv Dev from Fertil egg till end Metamorph 22.
- Nolte, R. T., Wisely, G. B., Westin, S., Cobb, J. E., Lambert, M. H., Kurokawa, R., Rosenfeld, M. G., Willson, T. M., Glass, C. K. and Milburn, M. V. (1998). Ligand binding and co-activator assembly of the peroxisome proliferator-activated receptor- γ . *Nature* **395**, 137-143.
- Nosjean, O. and Boutin, J. A. (2002). Natural ligands of PPAR γ : are prostaglandin J2 derivatives really playing the part? *Cell. Signal.* **14**, 573-583.
- Oberer, M., Marintchev, A. and Wagner, G. (2005). Structural basis for the enhancement of eIF4A helicase activity by eIF4G. *Genes Dev.* **19**, 2212-2223.
- Panas, M. D., Ivanov, P. and Anderson, P. (2016). Mechanistic insights into mammalian stress granule dynamics. *J. Cell Biol.* **215**, 313-323.
- Pande, V. and Ramos, M. J. (2005). Molecular recognition of 15-deoxy- Δ 12, 14-prostaglandin J 2 by nuclear factor-kappa B and other cellular proteins. *Bioorg. Med. Chem. Lett.* **15**, 4057-4063.
- Pereira, M. P., Hurtado, O., Cárdenas, A., Boscá, L., Castillo, J., Dávalos, A., Vivancos, J., Serena, J., Lorenzo, P. and Lizasoain, I. (2006). Rosiglitazone and 15-deoxy- Δ 12, 14-prostaglandin J2 cause potent neuroprotection after experimental stroke through noncompletely overlapping mechanisms. *J. Cereb. Blood Flow Metab.* **26**, 218-229.
- Remm, M., Storm, C. E. V. and Sonnhammer, E. L. L. (2001). Automatic clustering of orthologs and in-paralogs from pairwise species comparisons. *J. Mol. Biol.* **314**, 1041-1052.
- Rice, P., Longden, I. and Bleasby, A. (2000). EMBOSS: the European molecular biology open software suite. *Trends Genet.* **16**, 276-277.
- Rogers, G. W., Richter, N. J., Lima, W. F. and Merrick, W. C. (2001). Modulation of the helicase activity of eIF4A by eIF4B, eIF4H, and eIF4F. *J. Biol. Chem.* **276**, 30914-30922.
- Rozen, F., Edery, I., Meerovitch, K., Dever, T. E., Merrick, W. C. and Sonenberg, N. (1990). Bidirectional RNA helicase activity of eucaryotic translation initiation factors 4A and 4F. *Mol. Cell. Biol.* **10**, 1134-1144.
- Sali, A. and Blundell, T. (1994). Comparative protein modelling by satisfaction of spatial restraints. *Protein Struct. Distance Anal.* **64**, C86.
- Scher, J. U. and Pillinger, M. H. (2005). 15d-PGJ2: the anti-inflammatory prostaglandin? *Clin. Immunol.* **114**, 100-109.

- Schneider, C. A., Rasband, W. S. and Eliceiri, K. W. (2012). NIH Image to ImageJ: 25 years of image analysis. *Nat. Methods* **9**, 671-675.
- Schütz, P., Bumann, M., Oberholzer, A. E., Bieniossek, C., Trachsel, H., Altmann, M. and Baumann, U. (2008). Crystal structure of the yeast eIF4A-eIF4G complex: An RNA-helicase controlled by protein-protein interactions. *Proc. Natl. Acad. Sci. USA* **105**, 9564-9569.
- Shibata, T. (2015). 15-Deoxy- Δ 12,14-prostaglandin J2 as an electrophilic mediator. *Biosci. Biotechnol. Biochem.* **79**, 1044-1049.
- Straus, D. S. and Glass, C. K. (2001). Cyclopentenone prostaglandins: new insights on biological activities and cellular targets. *Med. Res. Rev.* **21**, 185-210.
- Straus, D. S., Pascual, G., Li, M., Welch, J. S., Ricote, M., Hsiang, C.-H., Sengchanthalangsy, L. L., Ghosh, G. and Glass, C. K. (2000). 15-deoxy- Δ 12,14-prostaglandin J2 inhibits multiple steps in the NF- κ B signaling pathway. *Proc. Natl. Acad. Sci. USA* **97**, 4844-4849.
- Süel, G. M., Lockless, S. W., Wall, M. A. and Ranganathan, R. (2003). Evolutionarily conserved networks of residues mediate allosteric communication in proteins. *Nat. Struct. Mol. Biol.* **10**, 59-69.
- Svitkin, Y. V., Gradi, A., Imataka, H., Morino, S. and Sonenberg, N. (1999). Eukaryotic initiation factor 4GII (eIF4GII), but not eIF4GI, cleavage correlates with inhibition of host cell protein synthesis after human rhinovirus infection. *J. Virol.* **73**, 3467-3472.
- Tan, H. Y. and Ng, T. W. (2008). Accurate step wedge calibration for densitometry of electrophoresis gels. *Opt. Commun.* **281**, 3013-3017.
- Vieth, M., Hirst, J. D. and Brooks, C. L. (1998). Do active site conformations of small ligands correspond to low free-energy solution structures? *J. Comput. Aided Mol. Des* **12**, 563-572.
- Xu, H. E., Lambert, M. H., Montana, V. G., Parks, D. J., Blanchard, S. G., Brown, P. J., Sternbach, D. D., Lehmann, J. M., Wisely, G. B. and Willson, T. M. (1999). Molecular recognition of fatty acids by peroxisome proliferator-activated receptors. *Mol. Cell* **3**, 397-403.
- Yang, A.-S. and Honig, B. (2000). An integrated approach to the analysis and modeling of protein sequences and structures. III. A comparative study of sequence conservation in protein structural families using multiple structural alignments. *J. Mol. Biol.* **301**, 691-711.
- Yang, H.-S., Jansen, A. P., Komar, A. A., Zheng, X., Merrick, W. C., Costes, S., Lockett, S. J., Sonenberg, N. and Colburn, N. H. (2003). The transformation suppressor Pdc4 is a novel eukaryotic translation initiation factor 4A binding protein that inhibits translation. *Mol. Cell. Biol.* **23**, 26-37.
- Yun, S. J. (2012). Development of a framework for the identification of key factors of biological systems. *Postech*.
- Yuriev, E. and Ramsland, P. A. (2013). Latest developments in molecular docking: 2010-2011 in review. *J. Mol. Recognit.* **26**, 215-239.